

Go With the Flow - Interactive Story Map



Go With The Flow



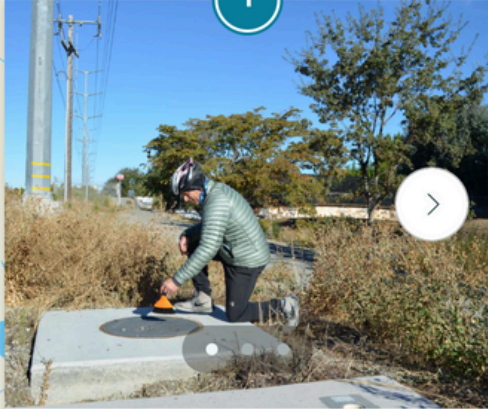
[Introduction](#)

[Guided Map Tour](#)

[Iron Horse History](#)

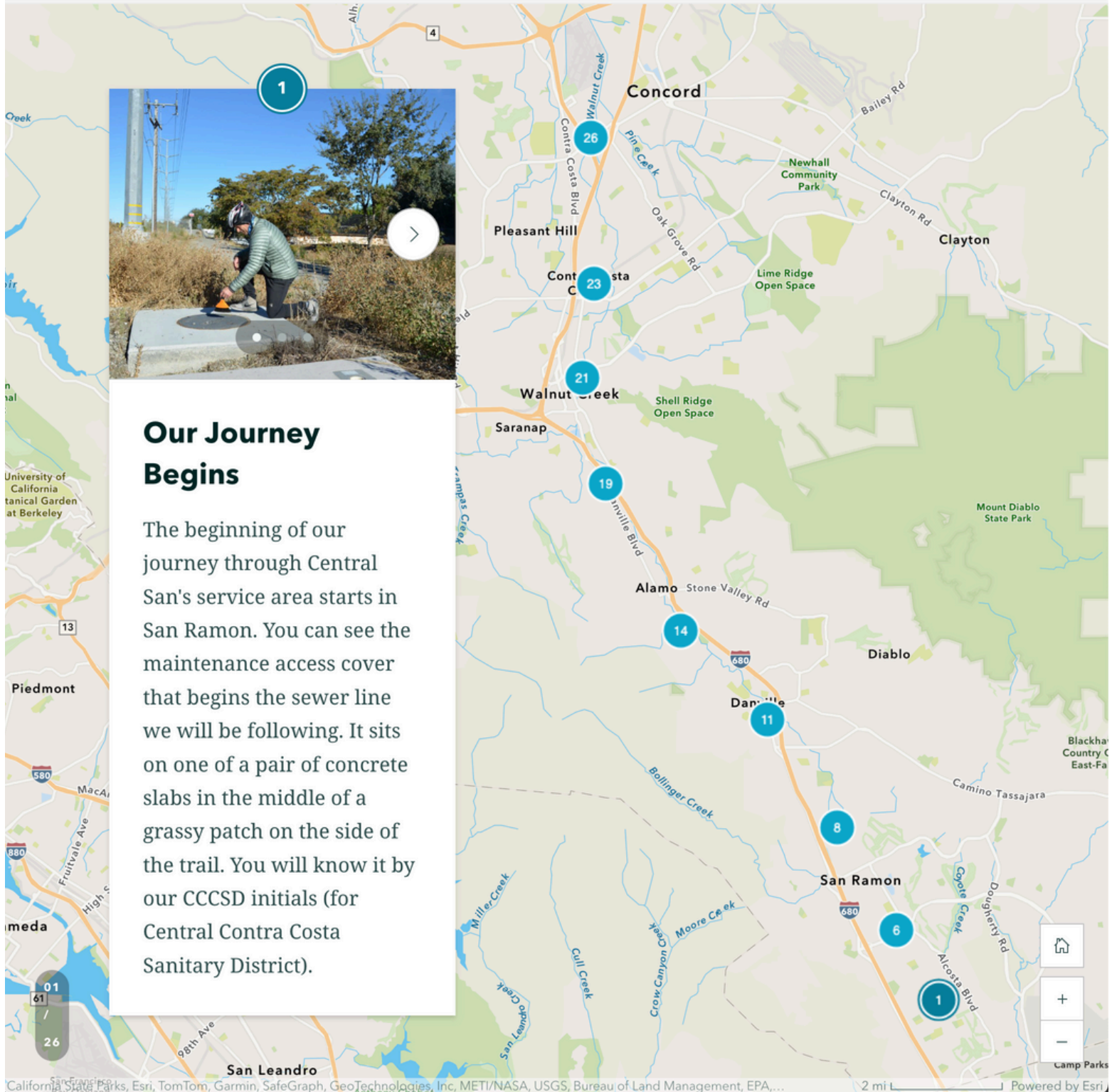
[Behind The Scenes](#)

[Credits](#)



Our Journey Begins

The beginning of our journey through Central San's service area starts in San Ramon. You can see the maintenance access cover that begins the sewer line we will be following. It sits on one of a pair of concrete slabs in the middle of a grassy patch on the side of the trail. You will know it by our CCCSD initials (for Central Contra Costa Sanitary District).



Click to explore the map!
centralsan.org/storymap

Go With the Flow - Website

EDUCATION

- Learn ×
- Guiding Principles

Pipe Protectors +

Delta Discovery Voyage

Wastewater Theater

Next Gen Sewer Science +

Distance Learning

Professional Development

Community Events

[Go With The Flow](#)

Wastewater Based Epidemiology
- Central San Academy
- Treatment Plant Tours
- Speakers Bureau
- Water and Wastewater Plant Operator Training
- Publications
- Videos
- Home & Garden
- Household Chemicals
- Talks Toastmasters

Go With The Flow

By Foot Or By Bike

Central San collects and cleans more than 35 million gallons of wastewater each and every day. Much of this collection process occurs underground, making it invisible to most people. However, there just so happens to be a pedestrian-friendly way to follow where your wastewater goes!



For 21 miles, the Iron Horse Trail pedestrian and bicycling path follows one of our sewer lines—nearly the entirety of the flow from the southeastern-most corner of our service area in San Ramon all the way to our treatment plant in Martinez.

To help you see (and sometimes hear) the flow of wastewater along this path, we’ve built a story map that follows the Iron Horse Trail and the wastewater infrastructure along the way.

Check Out The Map: [GO WITH THE FLOW](#)

Using the interactive map, you can view prominent access covers, convenient entry points to the trail, and information about what’s happening just below ground! By following the map, you can walk, bike, or run the path of wastewater from your home, school, office, all the way to our treatment plant!



REGISTER FOR A
BICYCLING
TOUR!

Bicycling Tours Of Our Service Area

[Go With The Flow - Section One: Pleasant Hill and Martinez](#)

[➔ Read more](#)



Click to explore our website!
centralsan.org/go-with-the-flow

Go With the Flow - Bike Tour Photos



Go With the Flow - Social Media Marketing



Facebook Post



Instagram Post



Instagram Screenshot

Go With the Flow - Partner Social Media Posts



511 Contra Costa
@511CC

Central San recently launched 'Go With The Flow', a biking or walking tour of @CentralSan's service area, following the flow of wastewater along the Iron Horse Regional Trail. Explore the route in person, or travel it virtually with the guided map tour.



storymaps.arcgis.com
Go With The Flow

A biking or walking tour of Central San's service area, following the flow of wastewater along the Iron Horse Regional Trail



CEEIN
@CEEIN4u

The Go With the Flow storymap from @CentralSan takes you on a tour of Central Contra Costa Sanitary District's service area, following the flow of wastewater along the Iron Horse Regional Trail. Check it out at storymaps.arcgis.com/stories/01f141... then get outside!



storymaps.arcgis.com
Go With The Flow

A biking or walking tour of Central San's service area, following the flow of wastewater along the Iron Horse Regional Trail



511 Contra Costa  @511CC · 1h

CYCLING EVENTS: Interested in attending Sunday's Bike Family Fest in Pleasant Hill? Or maybe going on a group ride on the Iron Horse or Delta de Anza Trail? Visit our Bike Events page for dates, details & other bike happenings: 511cc.org/bikeevents.



BIKE FAMILY FEST

SUNDAY, SEPT 8 • 10AM-2PM

A FREE EVENT AT THE PLEASANT HILL PUBLIC LIBRARY
COME RIDE YOUR BIKE • BUILD SKILLS • HAVE FUN!



**BIKE EAST BAY
2024 RIDE SERIES**

DELTA DE ANZA TRAIL

Saturday, September 28



**THE BAY
RIDE
2024**



**GO WITH
THE FLOW**

Join us for a FREE bicycling tour of
Central San's wastewater system!

Sunday, September 29
9 AM - Noon

Go With the Flow - Marketing Collateral



8.5"x11" Flyer



3"x5" Mini Flyers



QR Code Sign



Presentation Scrolling Slide

Go With the Flow - Pipeline Newsletter

12
13

GO WITH THE FLOW BY FOOT OR BY BIKE

Ever wonder what happens after you flush? Central San collects and cleans more than 35 million gallons of wastewater each and every day. To transport all this water to our treatment plant, we rely on over 1,500 miles of sewer lines, 18 pumping stations, and the people power of 60 Collection System Operators across our 141-square-mile service area.


Much of this collection process occurs underground, making it invisible to most people. However, if you know what to look for, you might spot clues that can help you better understand what's happening just out of sight. One of the easiest clues to look for are maintenance access covers (also known as "manholes"). These covers provide access points where our crews can inspect, clean, and maintain our pipes. If you see a cover, try imagining the sewer pipe running underneath! (**WARNING:** never open an access hole or remove a cover.)

Most of our covers follow sewer lines located under the streets where cars drive, making it hard to safely take a closer look. However, there just so happens to be a pedestrian-friendly way to follow where your wastewater goes! For 21 miles, the Iron Horse Trail (pedestrian and bicycling path follows one of our sewer lines—nearly the entirety of the flow from the southeastern-most corner of our service area in San Ramon all the way to our treatment plant in Martinez).


To help you see (and sometimes hear) the flow of wastewater along this path, we've built a visual map of the trail that anyone can use. We relied on the same mapping technology that helps our crews in the field track the location, age, and health of our pipes underground. This technology also allows our crews to identify the location of maintenance access covers across our service area so we can inspect, clean, and repair our pipes when needed.

Using the interactive map, you can view prominent access covers, convenient entry points to the trail, and information about what's happening just below ground! By following the map, you can walk, bike, or run the path of wastewater from your home, school, or office, almost all the way to our treatment plant.



To explore the map and get a better understanding of where your dirty water goes, visit centralsan.org/go-with-the-flow





If you go out on the trail, send us a picture of the infrastructure you see! Email your photo to blowender@centralsan.org, or tag us on Instagram or Facebook (@CentralsanDist). We may even share your photo in a future Pipeline.



--- IRON HORSE TRAIL ---

We've recently redesigned our maintenance access covers, and these new designs have started replacing old ones across our service area. If you're lucky, you might spot one on the Iron Horse Trail! Read more about the new covers on page 8.

Pipeline
Newsletter,
Spring 2023

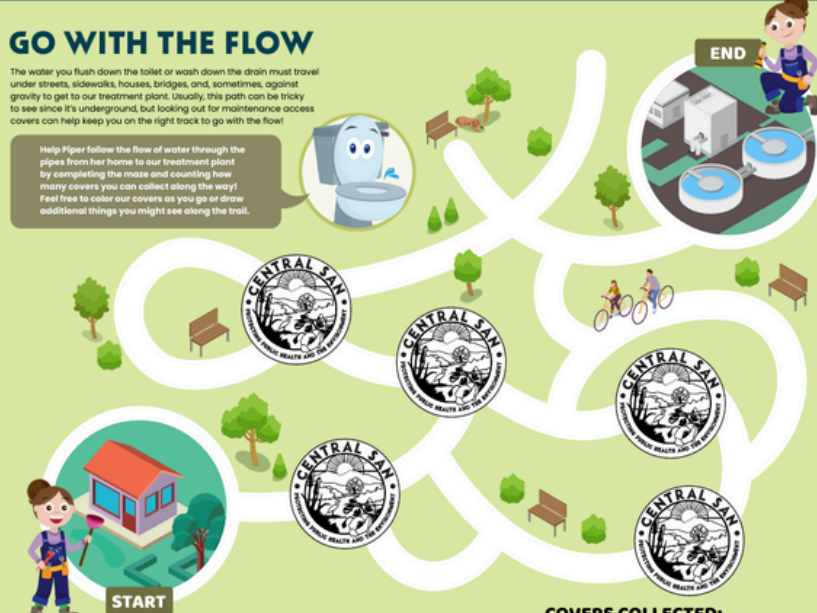
Pipeline
Newsletter,
Spring 2023
Kids' Page

14 KIDS' PAGE
KIDS' PAGE 15

GO WITH THE FLOW

The water you flush down the toilet or wash down the drain must travel under streets, sidewalks, houses, bridges, and, sometimes, against gravity to get to our treatment plant. Usually, this path can be tricky to see since it's underground, but looking out for maintenance access covers can help keep you on the right track to go with the flow!

Help Piper follow the flow of water through the pipes from her home to our treatment plant by completing the maze and counting how many covers you can collect along the way! Feel free to color our covers as you go or draw additional things you might see along the trail.




START **END**

COVERS COLLECTED: _____

When you're done, cut out this page and mail it to:

PIPER THE PIPE PROTECTOR
CENTRAL SAN
5019 IMHOFF PLACE
MARTINEZ, CA 94553

Include your name and address, and we will send you a canvas drawstring backpack you can use when exploring our system in real life, like out on the Iron Horse Trail! (See pages 12-13.)



NAME: _____

AGE: _____

ADDRESS: _____

GO WITH THE FLOW BICYCLE TOURS

For 21 miles, the Iron Horse Trail and bicycling path follows one of Central San's sewer lines—from one corner of our service area in San Ramon nearly all the way to our treatment plant in Martinez. Central San is now offering free guided bicycling tours that follow portions of this trail and the wastewater infrastructure along the way.

Come out and join us as we enjoy the warmer weather and learn more about the wastewater system that helps keep our community clean and healthy. Enjoy a fun group ride as we discover what's happening just below our wheels!

Who is the tour for? How do I register?

If you have a bicycle and are able to ride 12 miles (flat with lots of stops), this tour's for you! All ages are welcome, but kids under 18 must be accompanied by an adult. Parents with cargo bikes are welcome to bring little kids in tow. For more information, including upcoming tour dates, full tour routes, and how to register, visit: centralsan.org/bike



Pipeline
Newsletter,
Spring 2024

Go With the Flow - Participant Feedback and Sample Comments

How likely are you to participate in a Central San Bicycle Tour again? (scale of 1-5)	How likely are you to recommend Central San Bicycle Tours to your friends and colleagues? (scale of 1-5)
5 out of 5 = 20/27 = 74%	5 out of 5 = 23/27 = 85%
4 out of 5 = 7/27 = 26%	4 out of 5 = 4/27 = 15%

Sample Comments

Thank you very much for organizing a fantastic, fun, and educational bike tour of a portion of Central San's service area yesterday! It was nice to meet so many other Concord residents and wastewater and bike enthusiasts. It exceeded my expectations and I did not want it to end. Overall, the tour was a 10 out of 10!

I appreciated learning about the infrastructure on the trail, seeing the work truck up close, hearing from people who work at Central San. Also really liked seeing the new access cover designs so I can look out for them. And the leisurely bike ride as a whole was so much fun.

I LOVED the fact that we went by bicycle. The tour was way above my expectations, I wouldn't change a thing.

I loved how out-of-the-box this event was! You wouldn't necessarily think biking and wastewater go together, but this tour was a great opportunity to learn about Central San's collection system in an interactive way.

Really appreciated the opportunity to use bikes to cover a longer distance than walking would have. Thank you for the Team and their time and dedication in supporting the community awareness.

The "Go With the Flow" bike series is wonderful! Can not say enough good things about this series. All sanitary districts should copy this idea to allow ratepayers and the public explore their service area by bike, meet new people, and learn more about wastewater treatment.