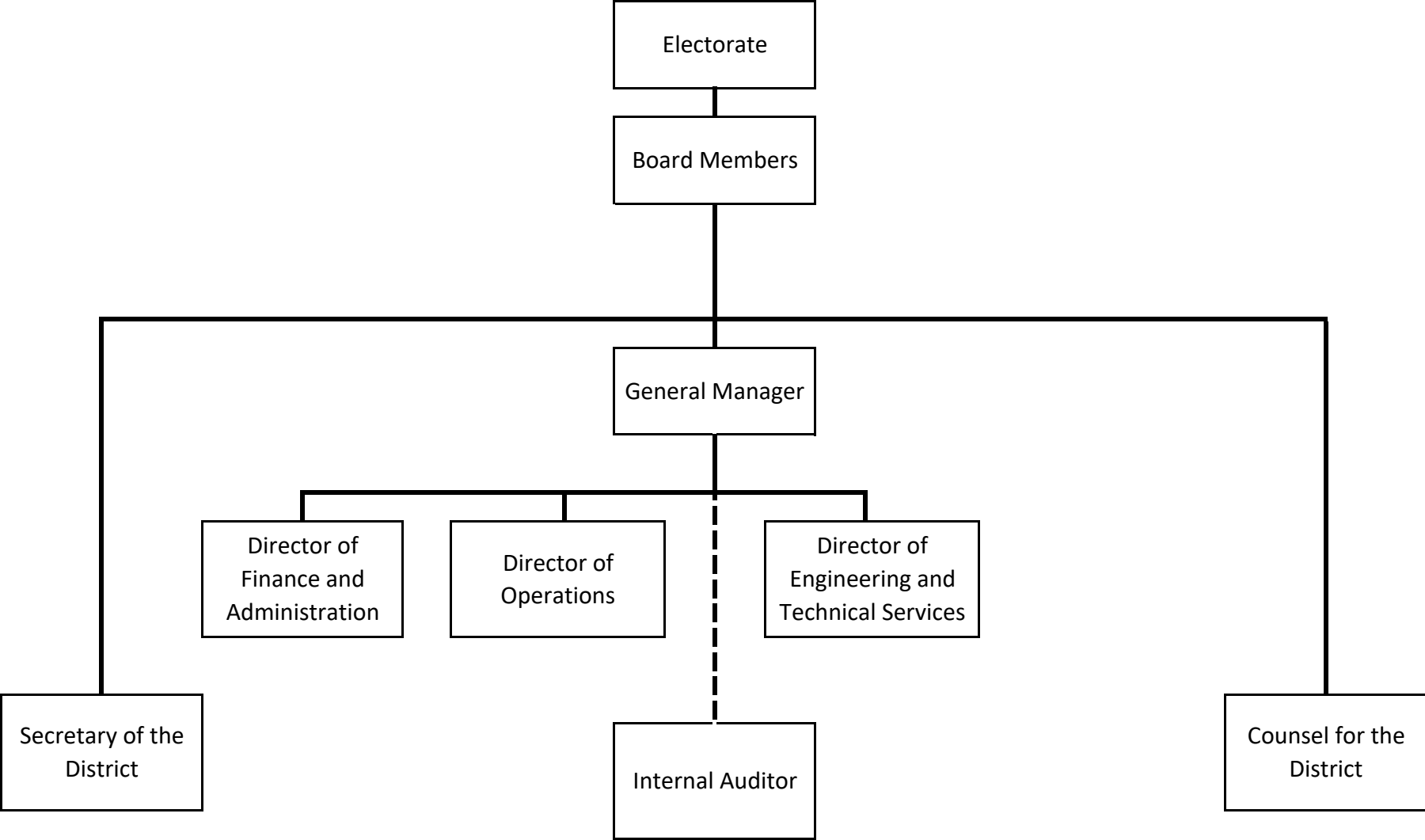
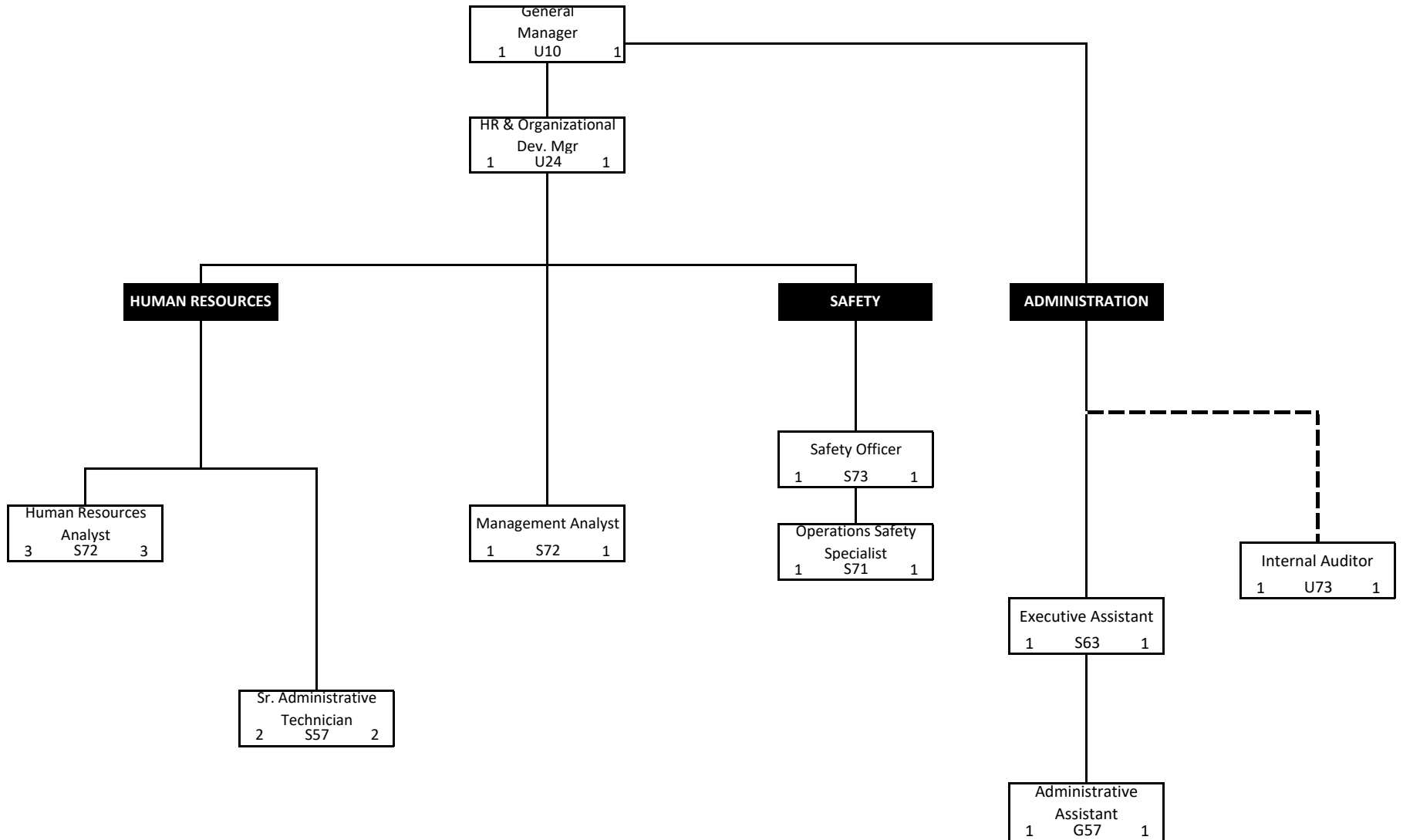


CENTRAL CONTRA COSTA SANITARY DISTRICT
Organizational Chart - Composite



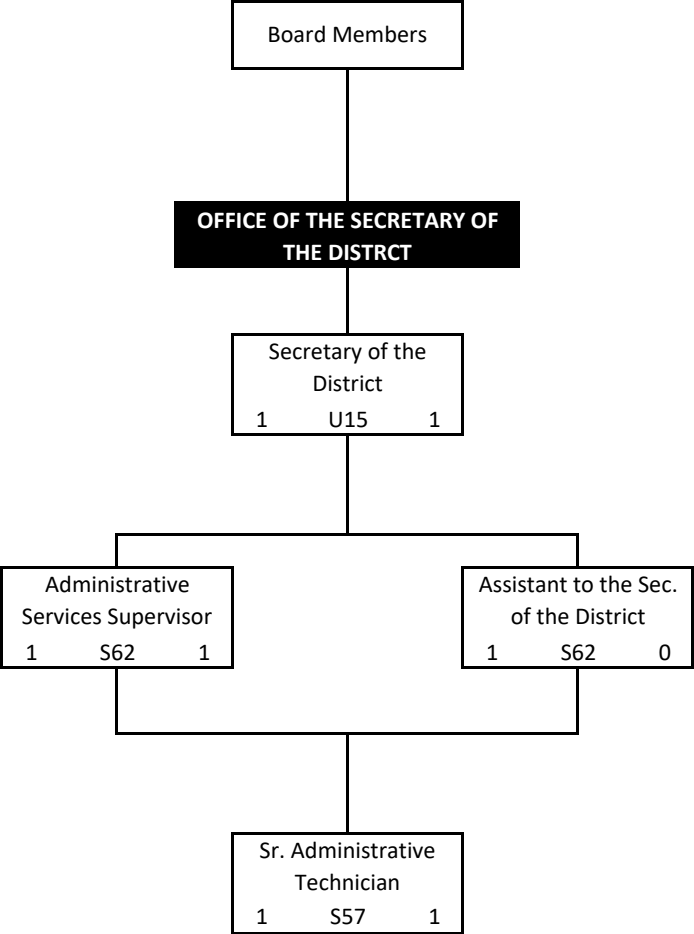
April 30, 2021
292 Total Budgeted Authorized Positions
279 Total Filled Positions

CENTRAL CONTRA COSTA SANITARY DISTRICT
Office of the General Manager



April 30, 2021
 13 Budgeted Authorized Positions (left)
 13 Filled Positions (right)

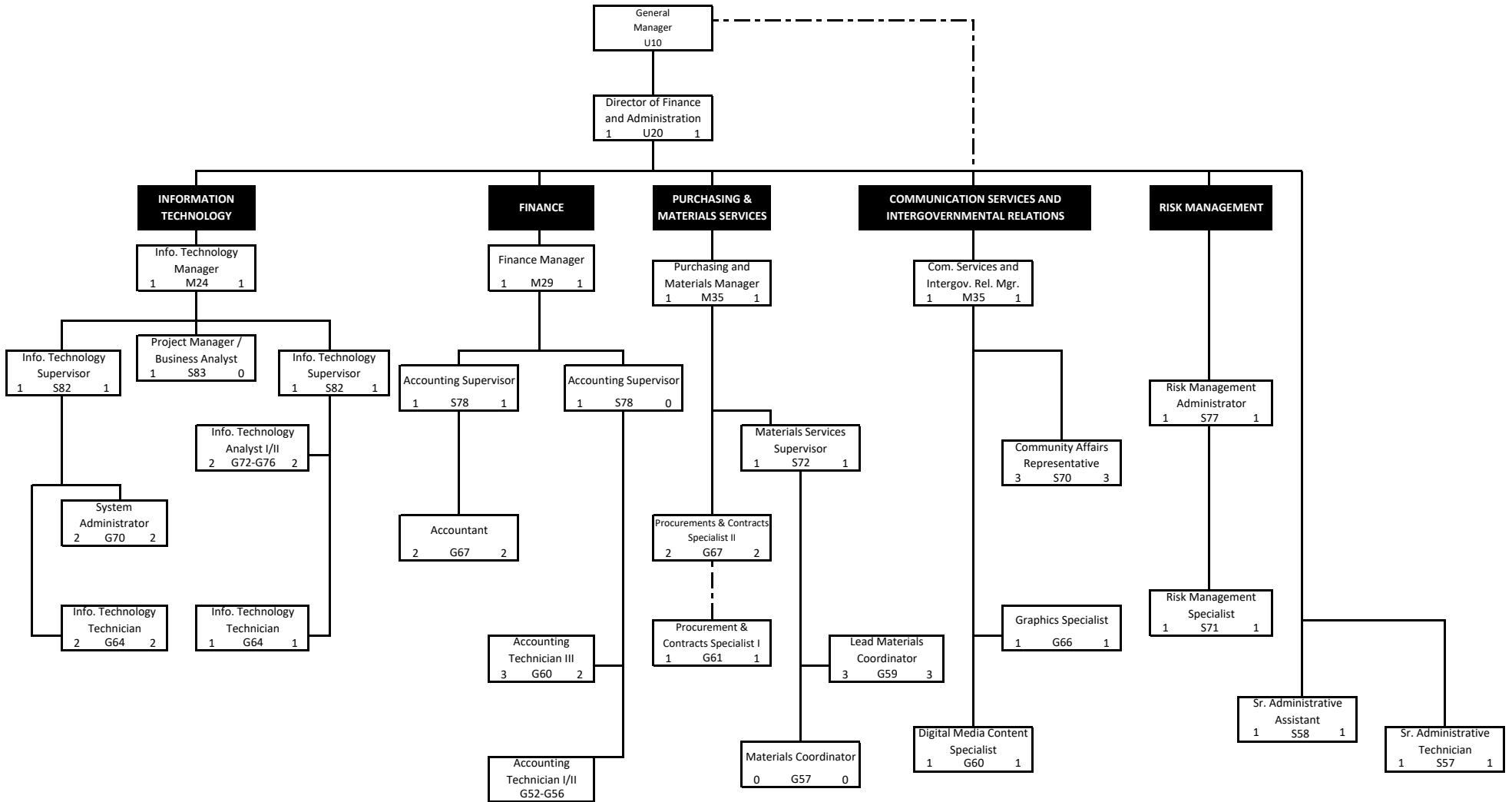
CENTRAL CONTRA COSTA SANITARY DISTRICT
Office of the Secretary of the District



April 30, 2021

- 4 Budgeted Authorized Positions (left)
- 3 Filled Positions (right)

CENTRAL CONTRA COSTA SANITARY DISTRICT Administration Department



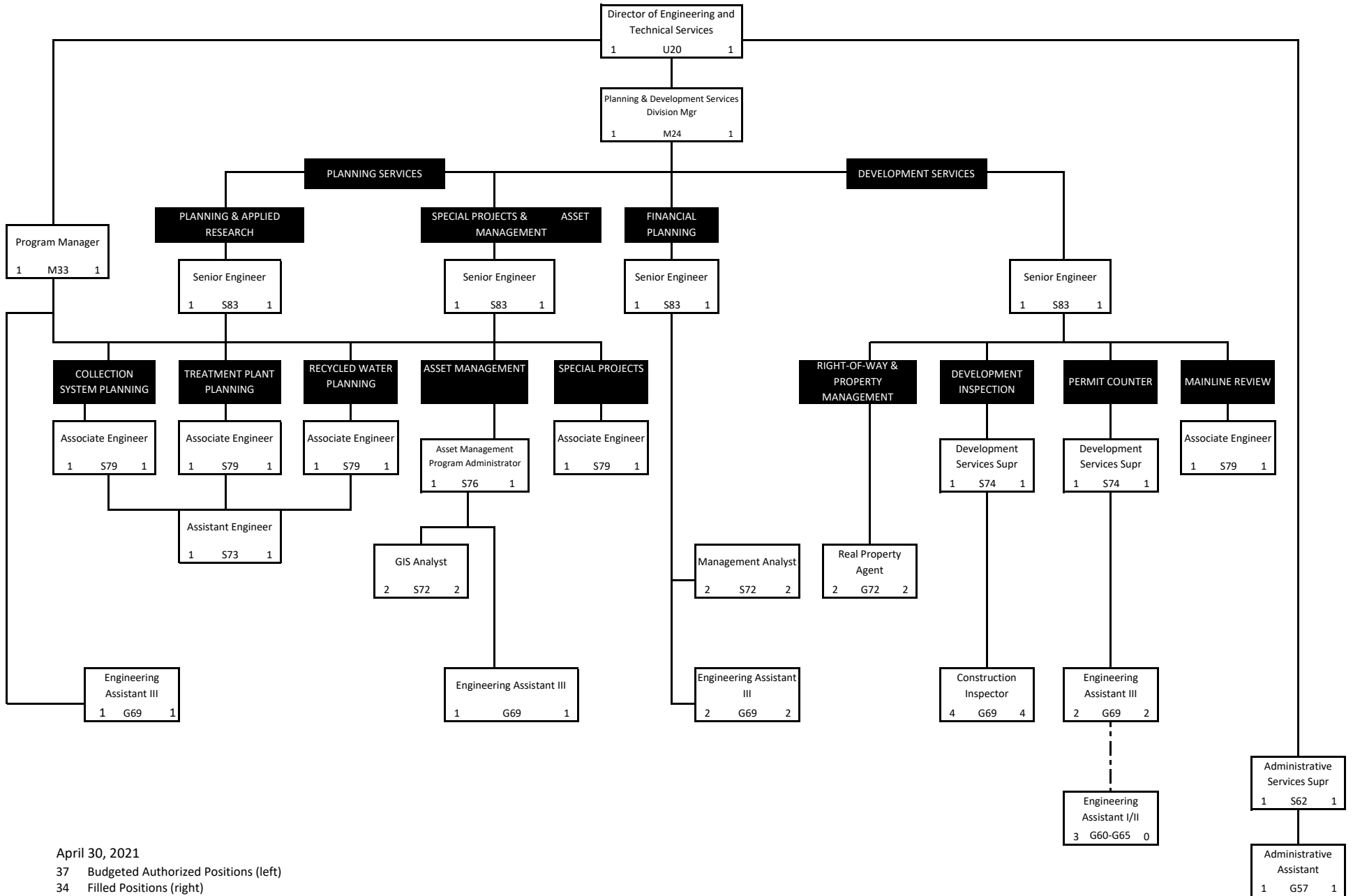
April 30, 2021

38 Budgeted Authorized Positions (left)

35 Filled Positions (right)

CENTRAL CONTRA COSTA SANITARY DISTRICT

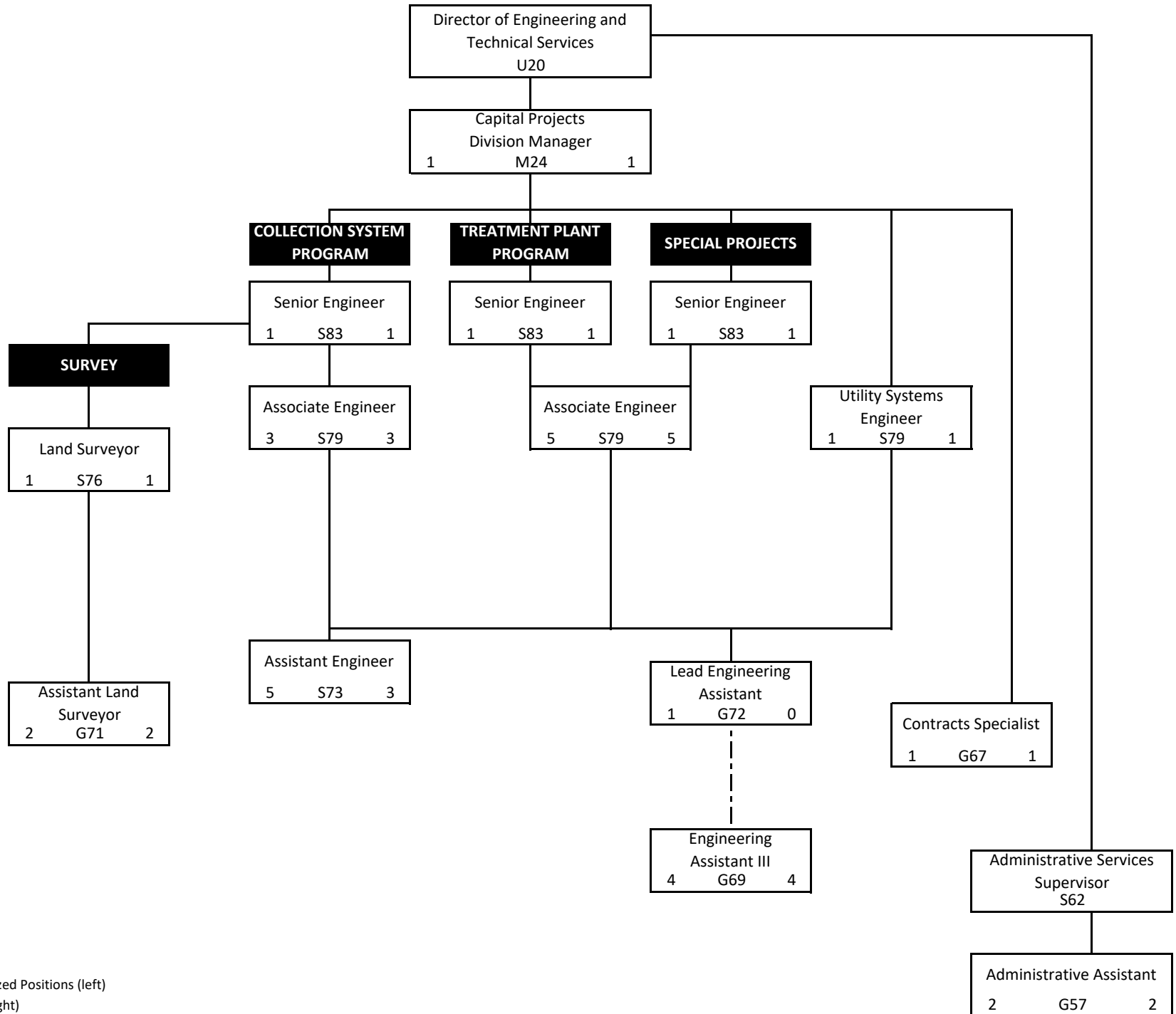
Engineering and Technical Services Department - Planning and Development Services Division



April 30, 2021
 37 Budgeted Authorized Positions (left)
 34 Filled Positions (right)

CENTRAL CONTRA COSTA SANITARY DISTRICT

Engineering and Technical Services Department - Capital Projects Division



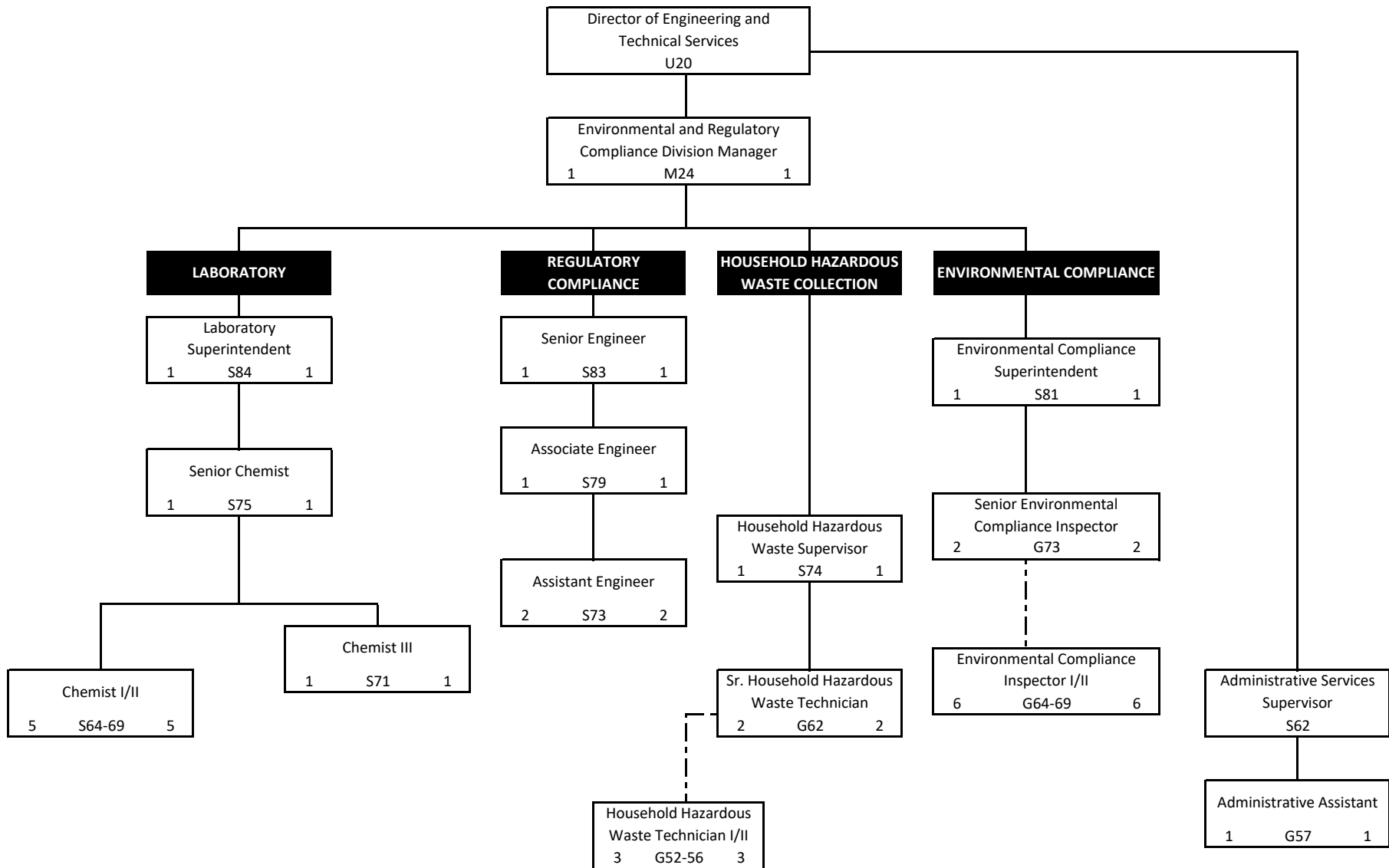
April 30, 2021

29 Budgeted Authorized Positions (left)

26 Filled Positions (right)

CENTRAL CONTRA COSTA SANITARY DISTRICT

Engineering and Technical Services Department - Environmental and Regulatory Compliance Division

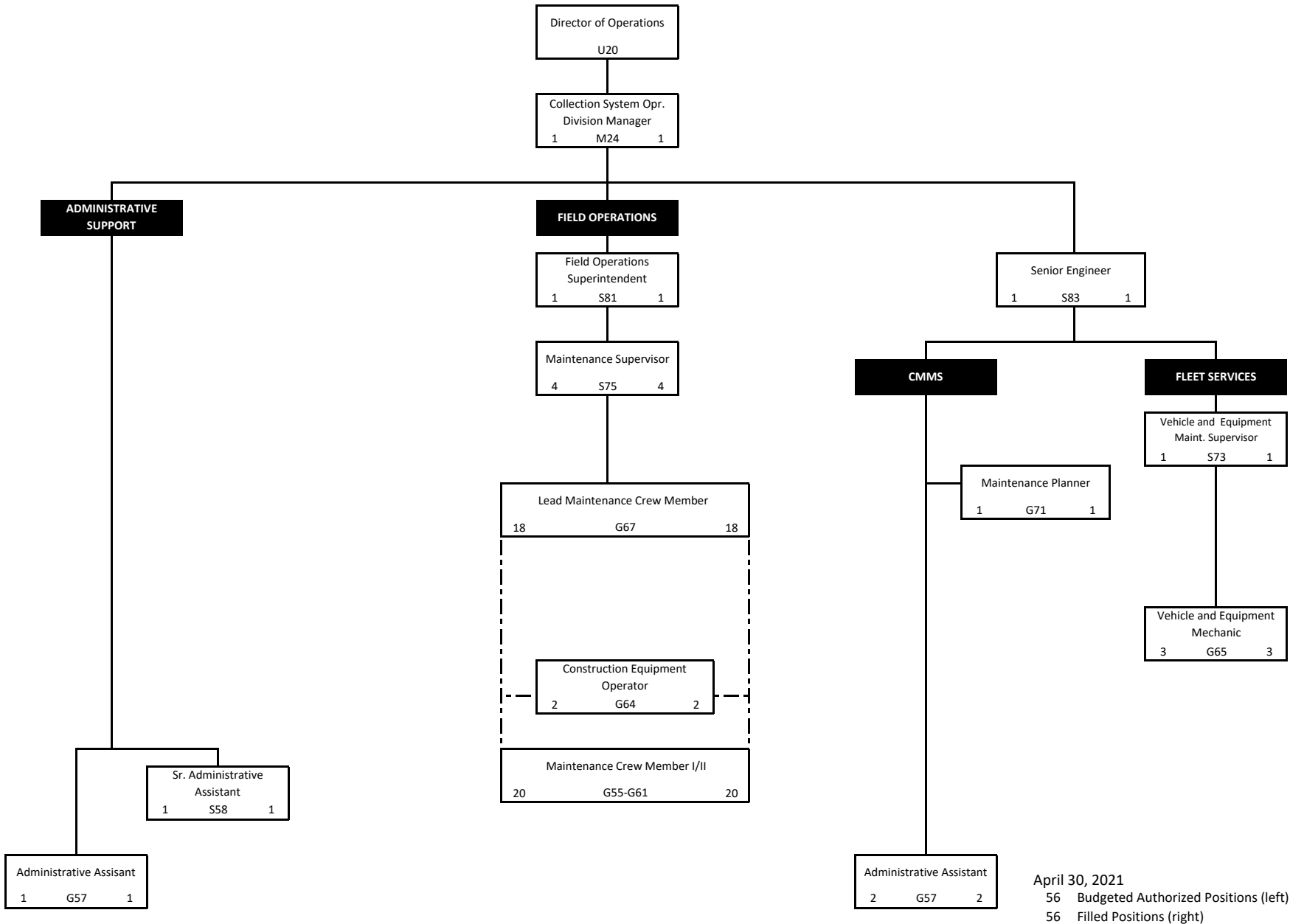


April 30, 2021

29 Budgeted Authorized Positions (left)

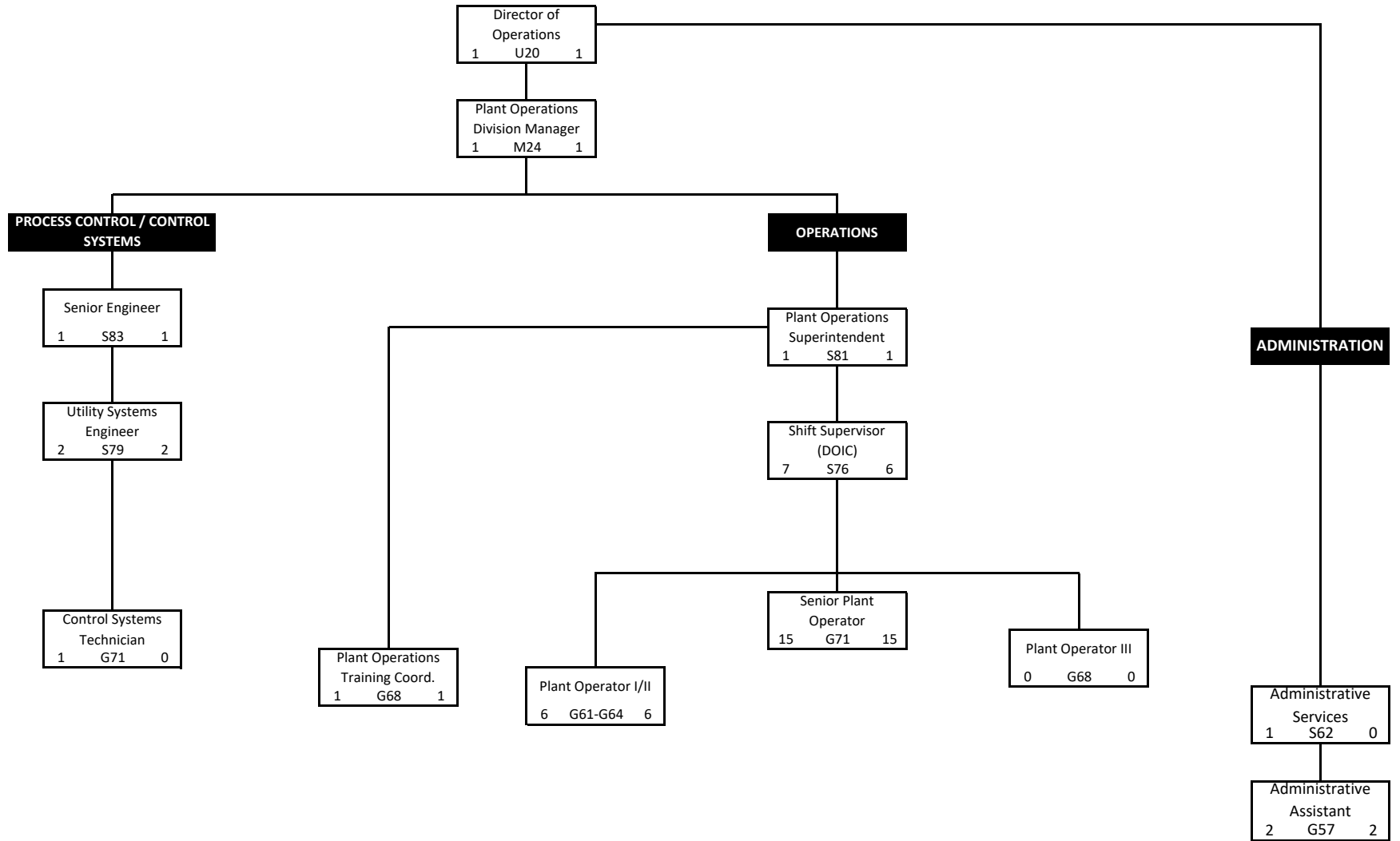
29 Filled Positions (right)

CENTRAL CONTRA COSTA SANITARY DISTRICT
Operations Department - Collection System Operations Division



April 30, 2021
 56 Budgeted Authorized Positions (left)
 56 Filled Positions (right)

CENTRAL CONTRA COSTA SANITARY DISTRICT
Operations Department - Plant Operations Division



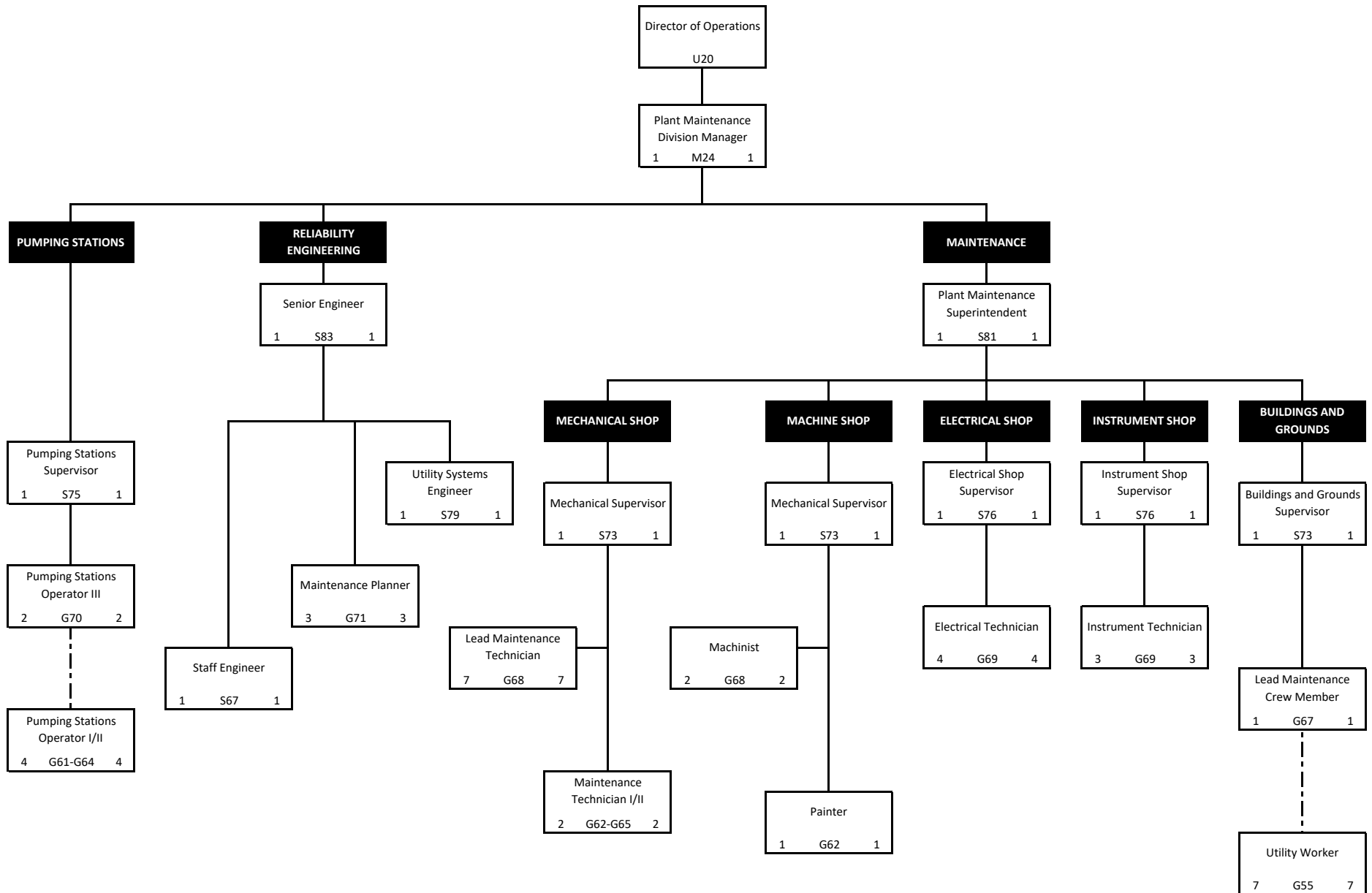
April 30, 2021

39 Budgeted Authorized Positions (left)

36 Filled Positions (right)

CENTRAL CONTRA COSTA SANITARY DISTRICT

Operations Department - Plant Maintenance Division



April 30, 2021

47 Budgeted Authorized Positions (left)

47 Filled Positions (right)

** *Maintenance Technician Trainee