



Central San Industrial User Academy

October 2024

Regulatory Overview

- Federal laws and regulations and their affect on local wastewater treatment agencies
- Statewide programs to protect water quality
- Tightening Standards
- How all these programs affect businesses operating in the Central San Service Area



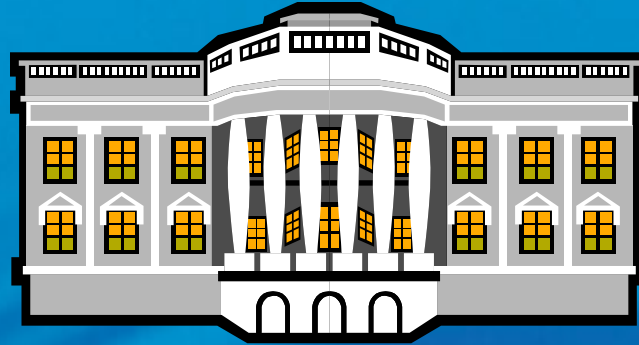
Regulatory Overview

- Federal Clean Water Act
 - National Pollutant Discharge Elimination System (NPDES) Permits with Water Quality Based Limits
 - Total Maximum Daily Load (TMDL) program
 - Pretreatment regulations
- Oversight, citations, Cease and Desist Orders, penalties
- Trends in the industry (e.g. watershed protection)
- Federal → State → Local regulations

<https://www.epa.gov/laws-regulations/summary-clean-water-act>

<https://www.cccleanwater.org/>

Regulatory Overview





State Programs to Control Water Quality

- NPDES Permit Standards
 - More stringent; uncontrollable pollutants
 - Minimum Mandatory Penalties
- TMDLs
 - Strict control limits with other program requirements
- Sanitary Sewer Overflows (SSOs)
- Stormwater permits and standards

<https://www.waterboards.ca.gov/sanfranciscobay/>



Central San Environmental Compliance Program

What is the function of the Environmental Compliance Program?

- Pretreatment to protect sanitary sewer system
- Pollution Prevention to minimize pollutants from all sources
 - Public Education/Outreach
 - Household Hazardous Waste Collection
- Stormwater protection under contract



CCCSD Environmental Compliance Program

Federal Pretreatment Standards

- Under federal regulations, minimum standards set for Pretreatment Programs:
 - Establish legal authority (e.g. CCCSD Source Control Ordinance)
 - Enforcement Response Plan (ERP)
 - Program administration and reporting
 - Application of federal Categorical Pretreatment Standards

<https://www.epa.gov/npdes/national-pretreatment-program>



CCCSD Environmental Compliance Program

How does Environmental Compliance work?

- Ordinance (Title 10) for legal authority to:
 - Inspect businesses
 - Sample wastewater discharges
 - Permit businesses
 - Enforcement for violations

<https://www centralsan.org/post/regulations>

- Education and use of Best Management Practices (BMPs)
- City stormwater management ordinances



CCCCSD Environmental Compliance Program

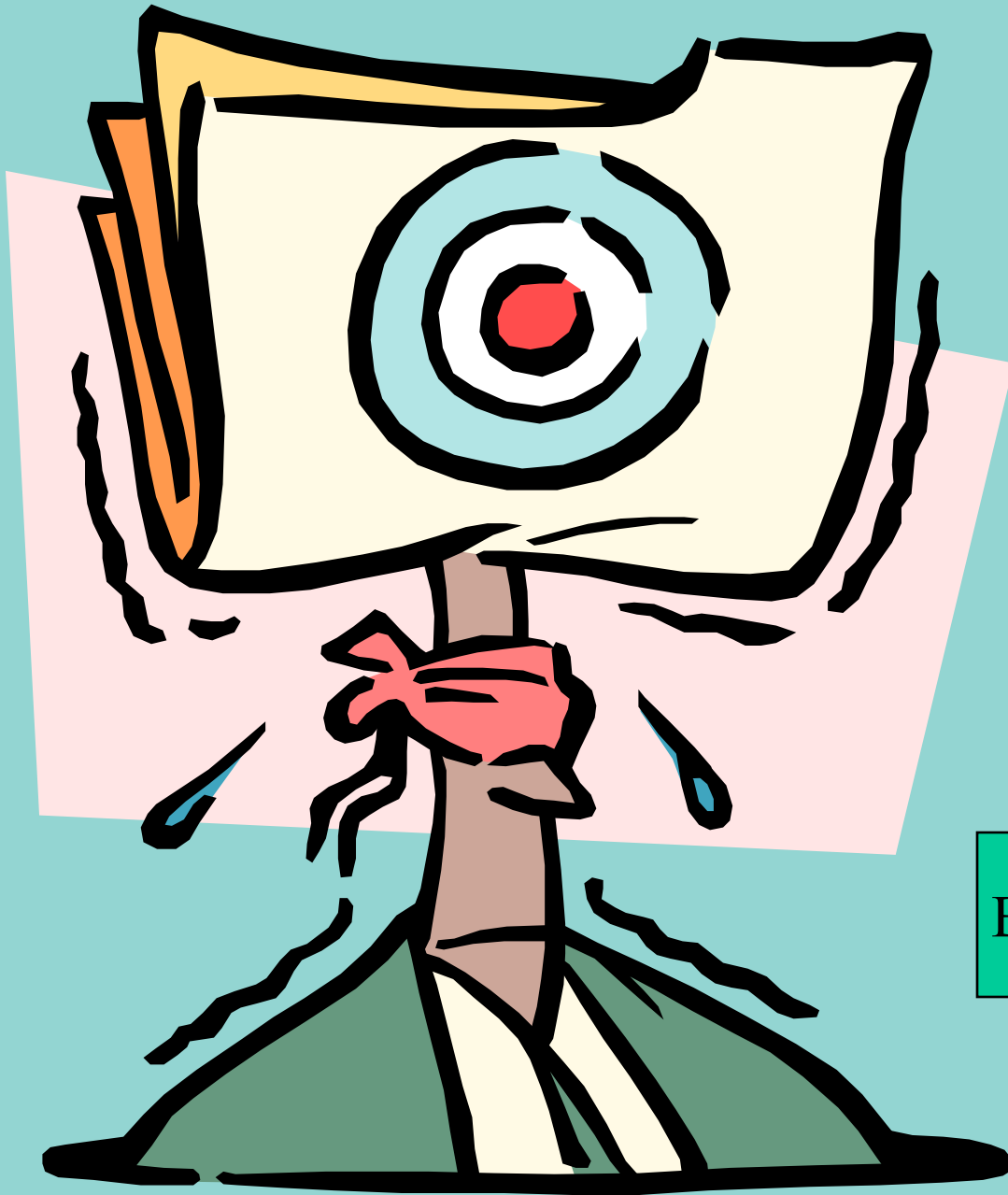
What does Environmental Compliance do?

- Inspections (Sanitary and Stormwater)
 - >1,200/year of > 800 businesses
- Education aka Pollution Prevention/BMPs
- Permits
 - More than 600 businesses currently (includes BMP)
- Sampling
 - Dischargers – compliance
 - Collection system – studies, trend analysis
 - Storm water investigations
- Enforcement
 - Informal (field issued documents)
 - Formal (penalty with formal corrective actions)

What it may feel like

Environmental
Permits & Compliance
Inspections

Business Owner



Working together to achieve water quality protection
with incentives to promote cooperation.





Suggestions or Questions?

Feel free to contact your Inspector, or any member of the Environmental Compliance Group

<https://www.centrsan.org/pod/environmental-compliance-contacts>