



# Central San Industrial User Academy

October 2018

## Regulatory Overview

- Federal laws and regulations and their affect on local wastewater treatment agencies
- Statewide programs to protect water quality
- Tightening Standards
- How all these programs affect businesses operating in the Central San Service Area



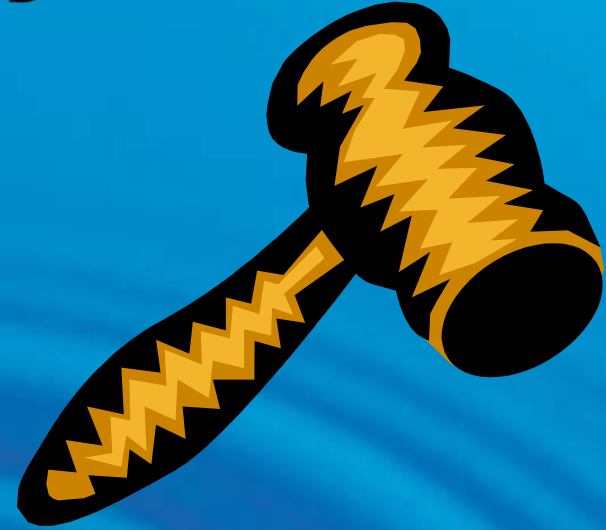
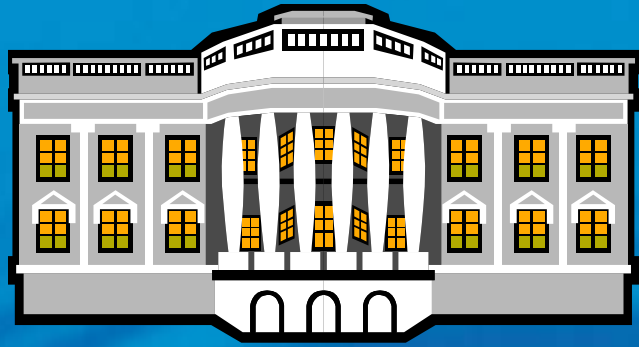
# Regulatory Overview

- Federal Clean Water Act
  - National Pollutant Discharge Elimination System (NPDES) Permits with Water Quality Based Limits
  - Total Maximum Daily Load (TMDL) program
  - Pretreatment regulations
- Oversight, citations, Cease and Desist Orders, penalties
- Trends in the industry (e.g. watershed protection)
- Federal → State → Local regulations

<https://www.epa.gov/laws-regulations/summary-clean-water-act>

<https://www.cccleanwater.org/>

# Regulatory Overview





# State Programs to Control Water Quality

- NPDES Permit Standards
  - More stringent; uncontrollable pollutants
  - Minimum Mandatory Penalties
- TMDLs
  - Strict control limits with other program requirements
- Sanitary Sewer Overflows (SSOs)
- Stormwater permits and standards



# Central San Environmental Compliance Program

What is the function of the Environmental Compliance Program?

- Pretreatment to protect sanitary sewer system
- Pollution Prevention to minimize pollutants from all sources
  - Public Education/Outreach
  - Household Hazardous Waste Collection
- Stormwater protection under contract



# CCCSD Environmental Compliance Program

## Federal Pretreatment Standards

- Under federal regulations, minimum standards set for Pretreatment Programs:
  - Establish legal authority (e.g. CCCSD Source Control Ordinance)
  - Enforcement Response Plan (ERP)
  - Program administration and reporting
  - Application of federal Categorical Pretreatment Standards

<https://www.epa.gov/npdes/national-pretreatment-program>



# CCCSD Environmental Compliance Program

## How does Environmental Compliance work?

- Ordinance (Title 10) for legal authority to:
  - Inspect businesses
  - Sample wastewater discharges
  - Permit businesses
  - Enforcement for violations

<https://www.centrialsan.org/post/regulations>

- Education and use of Best Management Practices (BMPs)
- City stormwater management ordinances



# CCCSD Environmental Compliance Program

## What does Environmental Compliance do?

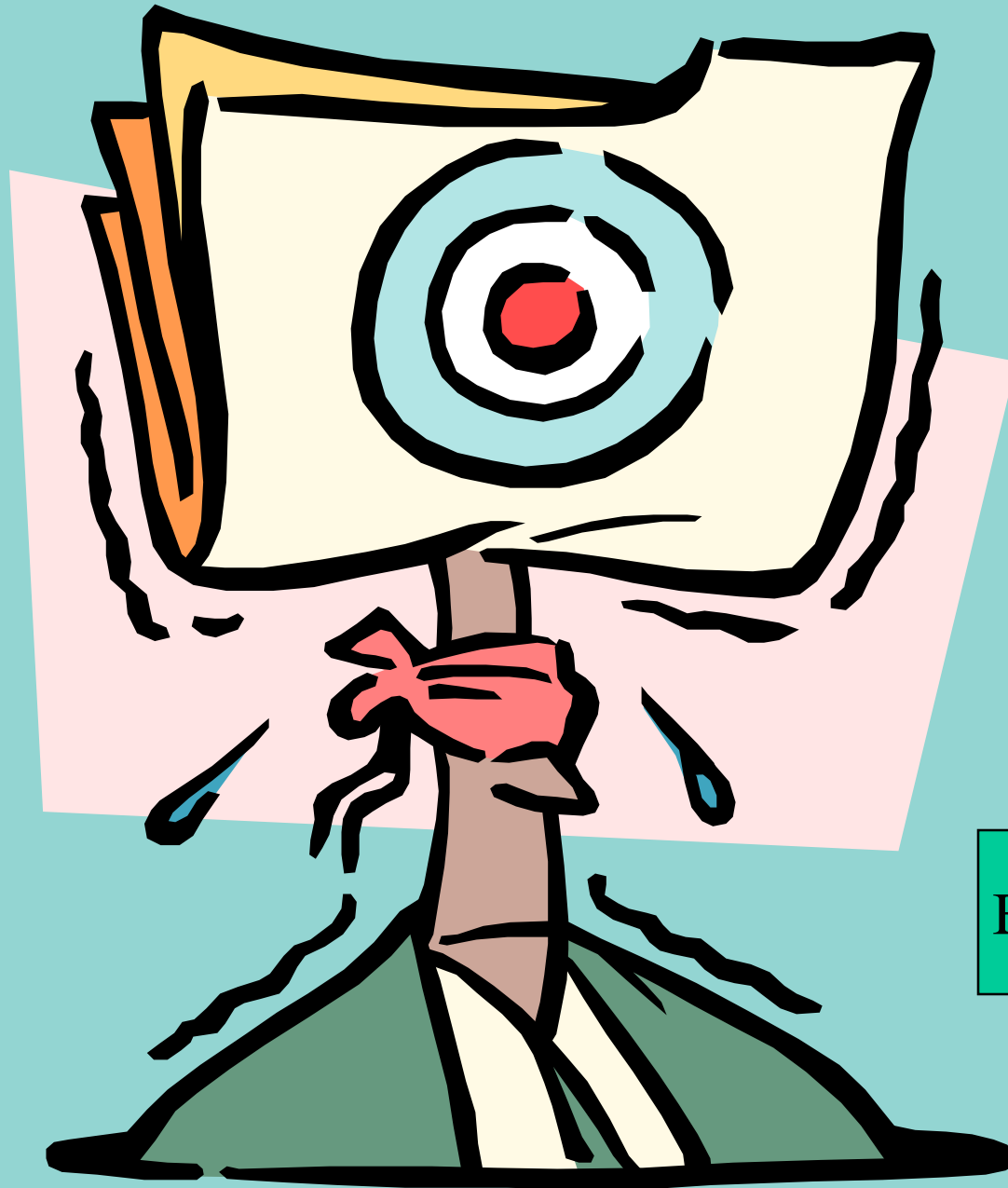
- Inspections (Sanitary and Stormwater)
  - >1,200/year of > 800 businesses
- Education aka Pollution Prevention/BMPs
- Permits
  - More than 600 businesses currently (includes BMP)
- Sampling
  - Dischargers – compliance
  - Collection system – studies, trend analysis
  - Storm water investigations
- Enforcement
  - Informal (field issued documents)
  - Formal (penalty with formal corrective actions)



What it may feel like

Environmental  
Permits & Compliance  
Inspections

Business Owner



Working together to achieve water quality protection  
with incentives to promote cooperation.





# Suggestions or Questions?

Feel free to contact your Inspector,  
or any member of the  
Environmental Compliance Group

<https://www.centrsan.org/pod/environmental-compliance-contacts>

